



ProDVX FM-10S (8080975)

Installation Manual

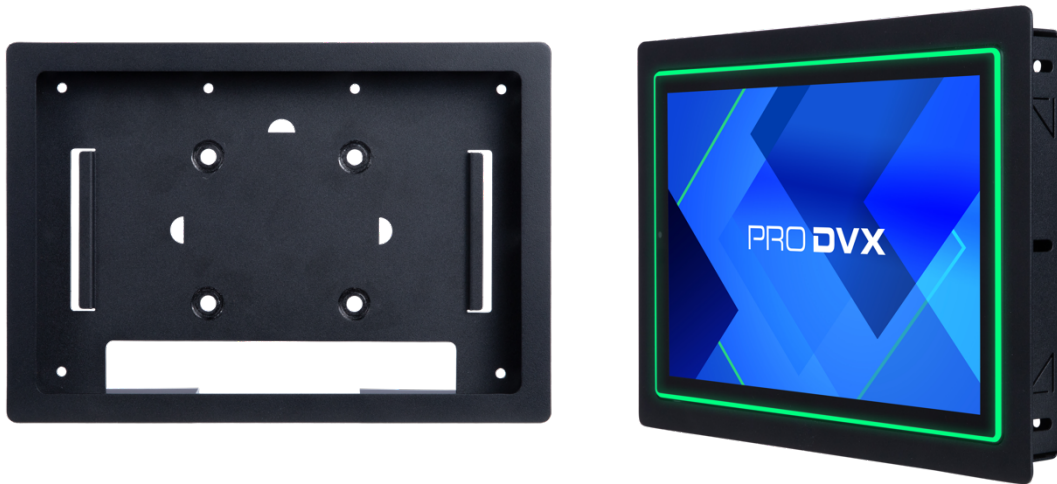
PRO DVX | ALWAYS ☒ ON

www.prodvx.com

ProDVX FM-10S (8080975)

Flush Mount for S-series

Overview



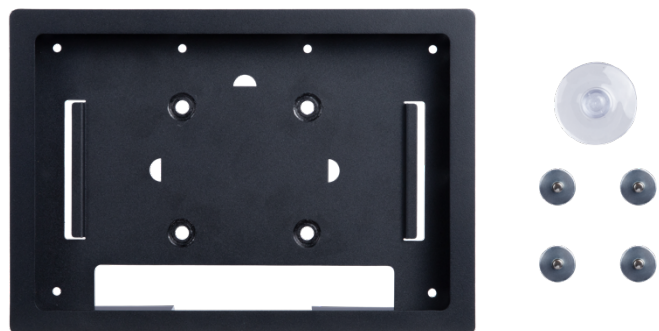
The FM-10S is a metal flush mount that allows you to mount our APPC-10S-series in a drywall or other material. With the mounting holes and drywall fixtures, the FM-10S can be used in various situations and scenarios. The Flush mount is also easy to remove for maintenance.

Please note!

When installed in a flushmount, the operating temperature of the device must not exceed the specified maximum values. ProDVX recommends maintaining a surrounding temperature within standard office ranges and a relative humidity (non-condensing) below 80%. For optimal performance, CPU load should remain around 70%, with only short peaks up to 100%. Ensure that the area around the flushmount remains unobstructed; any insulation or similar materials inside the wall should be removed at least 10 cm from all sides of the mount to allow adequate airflow. ProDVX recommends mounting the device in the FM-10S without a cable covers to improve air circulation.

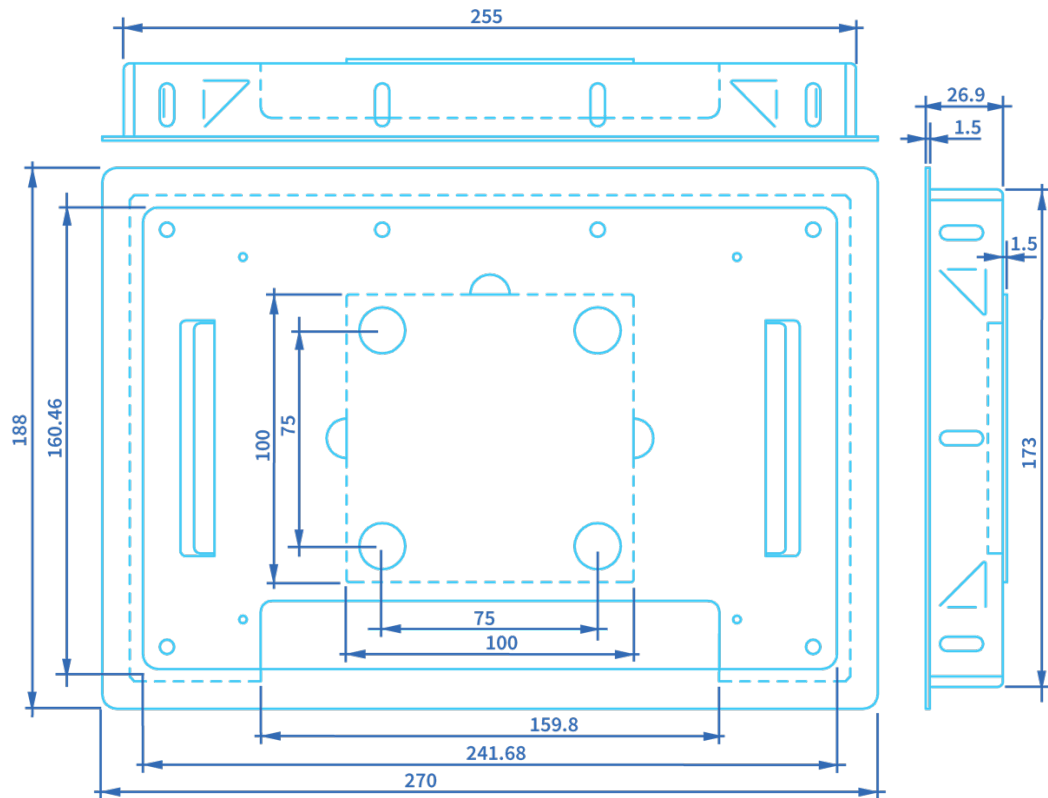
Package Contents

- 1 x FM-10S for S-series
- 4 x Magnets
- 4 x Plastic Washers
- 4 x Screws

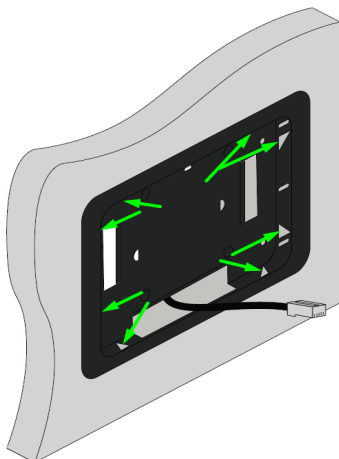
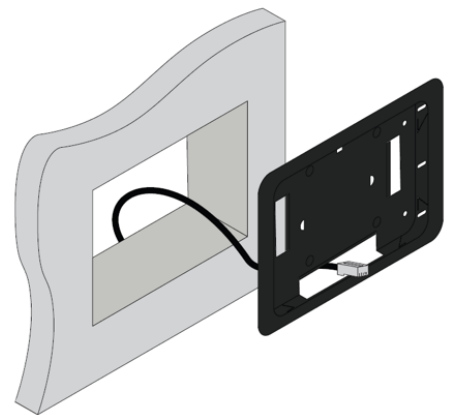


Mounting Instructions

1. Use the dimensions on the drawing to draw the boundaries of the hole.

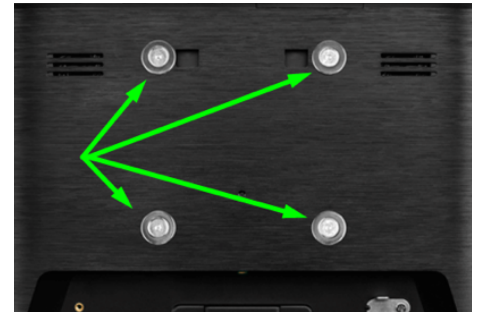


2. Make a hole in the drywall or other material.
3. Pull the Ethernet cable through the hole in the wall and thread it through the FM-10S.



4. Slide the FM-10S into the hole in the wall until it is pressed fully against the wall.
5. Press a screwdriver into the triangle metal flaps of the unit to secure the FM-10S into the wall. There are 8 triangles to press in, two on each side.

6. Thread the screw into the magnet first, followed by the washer.
7. Screw the screws with magnets into the back of the ProDVX 10" S-series Panel PC (VESA-75 holes).



8. Connect the Ethernet cable into the port on the back of the ProDVX 10" Panel PC.
9. Slide the Ethernet cable back into the wall as the ProDVX 10" Panel PC is mounted into the FM-10.

Panel Removal

If the panel needs to be removed from the flush mount, it can be done using next method:

Attach the included suction cup to the ProDVX 10" S-series Panel PC and gently pull the panel off the FM-10S.

